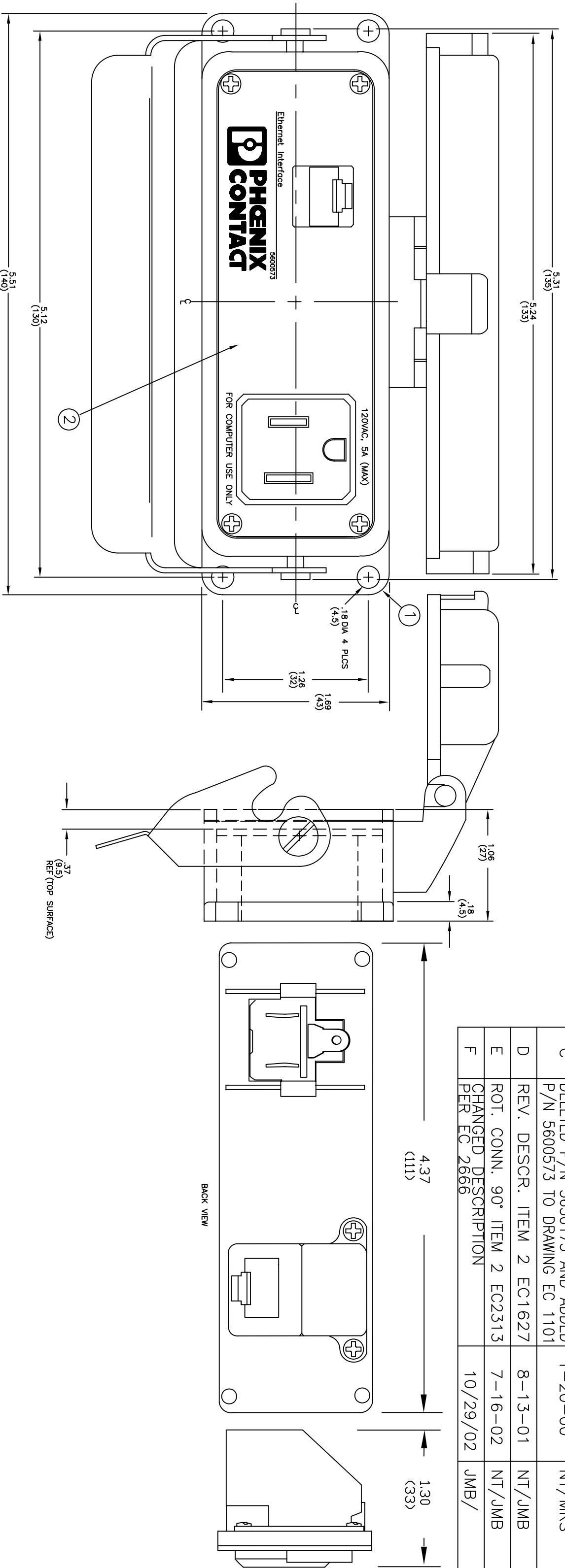


REVISIONS			
REV.	DESCRIPTION	DATE	APPROVED
A	ADDED ITEM 3, NOTE 2 EC1002	6-4-99	NT/JUG
B	DELETED P/N AND ADDED P/N 5650175 TO DRAWING EC 1073	11-22-99	NT/MRS
C	DELETED P/N 5650175 AND ADDED P/N 5600573 TO DRAWING EC 1101	1-20-00	NT/MRS
D	REV. DESCR. ITEM 2 EC1627	8-13-01	NT/JMB
E	ROT. CONN. 90° ITEM 2 EC2313	7-16-02	NT/JMB
F	CHANGED DESCRIPTION PER EC 2666	10/29/02	JMB/



UNLESS OTHERWISE SPECIFIED DIMENSIONS ARE IN INCHES

PROJECTION	TOLERANCES	ANGLES
	N/A	N/A

**MATERIAL**  
DUST COVER-POLYAMIDE 6,6  
HOUSING-ALUMINUM CAST ALLOY  
LOCKING PINS AND HANDLE - STEEL

**FINISH**  
DUST COVER-GRAY  
HOUSING-HAMMER FINISH, SILVER-GRAY  
LOCKING PINS AND HANDLE - ZINC PLATE

APPROVALS	DATE
DRAWN	2/19
N TATE	99
CHECKED	2/25
JSC	99
APPROVED	2/25
KBB	99



P.O. BOX 4100  
HARRISBURG, PA  
(717) 944-1300  
FAX (717) 944-1625

TITLE  
HC-P: RJ45 CAT 5  
120V AC

SIZE B DWG. NO. 5600573

DO NOT SCALE PRINT

SCALE 1:1

SHEET 1/1

REV. F